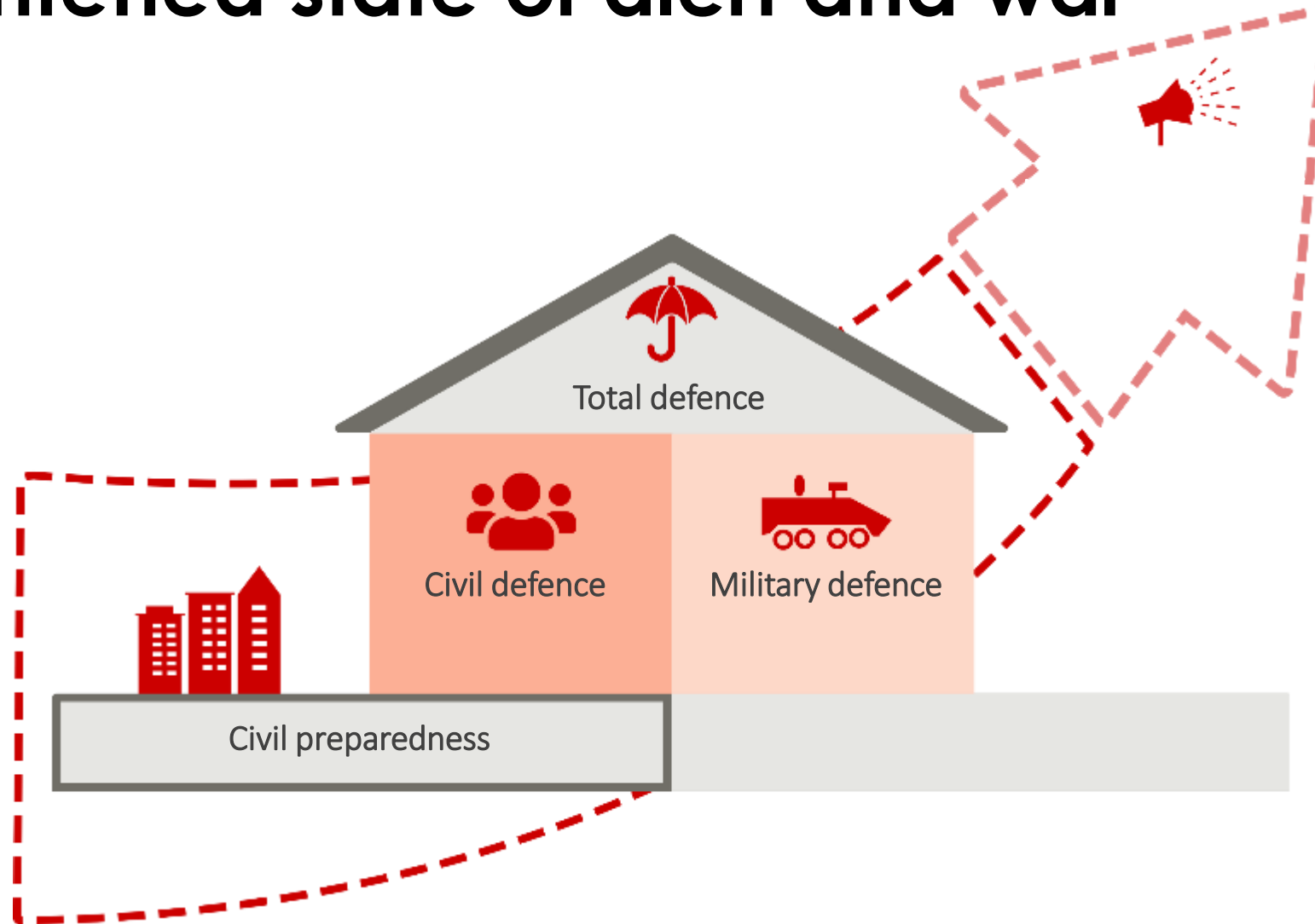




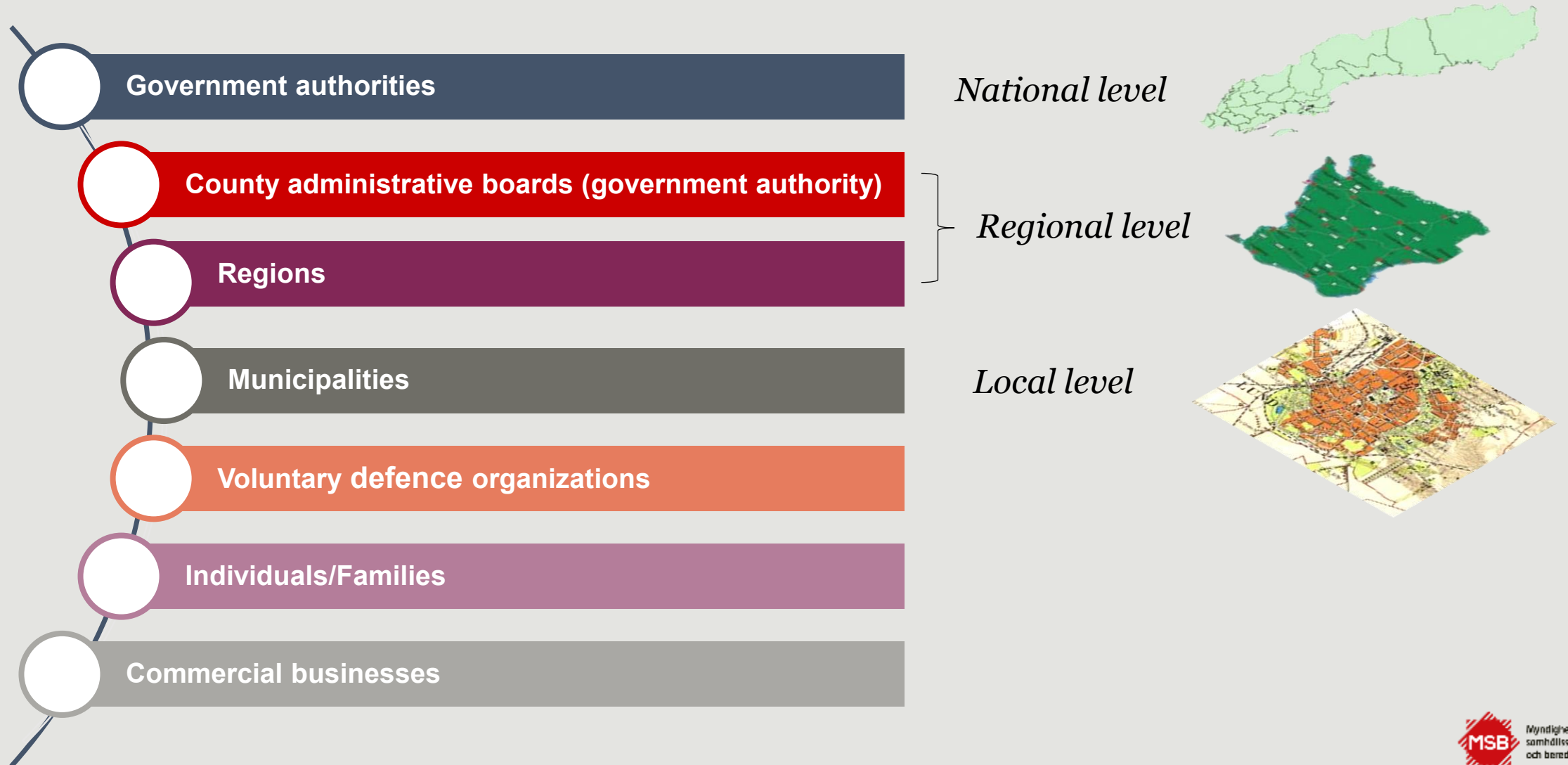
Total defence – a “whole of society” approach



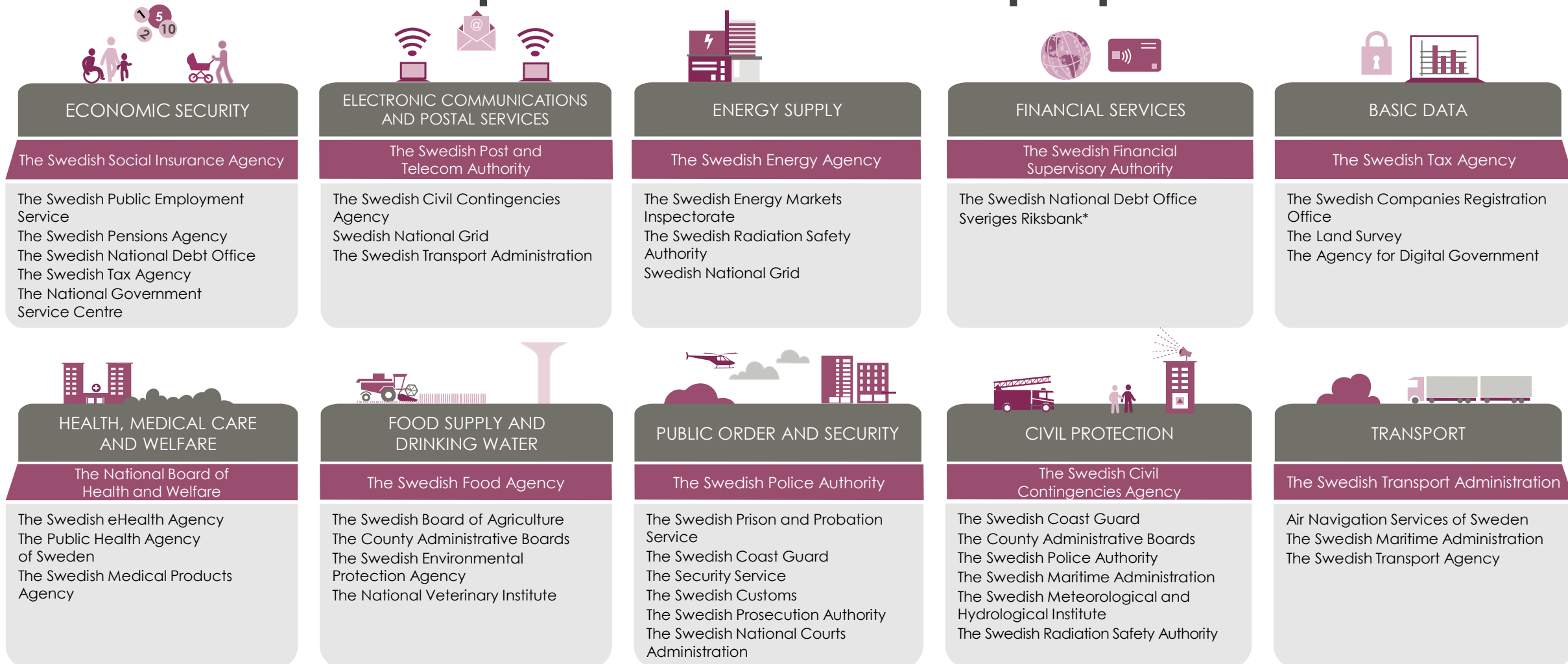
Heightened state of alert and war



Many actors are involved in civil defence activities



Ten civil preparedness sectors, each led by one agency with sectoral responsibilities for civil preparedness



Two new preparedness sectors since Summer 2025: 1) Trade, Industry and Construction (led by the Swedish Agency for Economic and Regional Growth). 2) Foreign Trade (National Board of Trade Sweden)

Common planning assumptions for total defence

Main take-aways:

- Sweden as a NATO Ally and Host Nation Support arrangements
- Operators of critical infrastructure functions should plan to upfold functionality of essential services even under severe disruptions in society and *with their own resources for at least two weeks.*

Seven dimensional cases

1. Hybrid threats
2. Host Nation Support
3. Attack against the northern part of Sweden
4. Attack against the Island of Gotland
5. Remote attack
6. Reinforcement of NATO's Northern Flank
7. Reinforcement of NATO in the Baltic Sea

