



Finnlines – Our net works

Kokonaisturvallisuuden webinaari

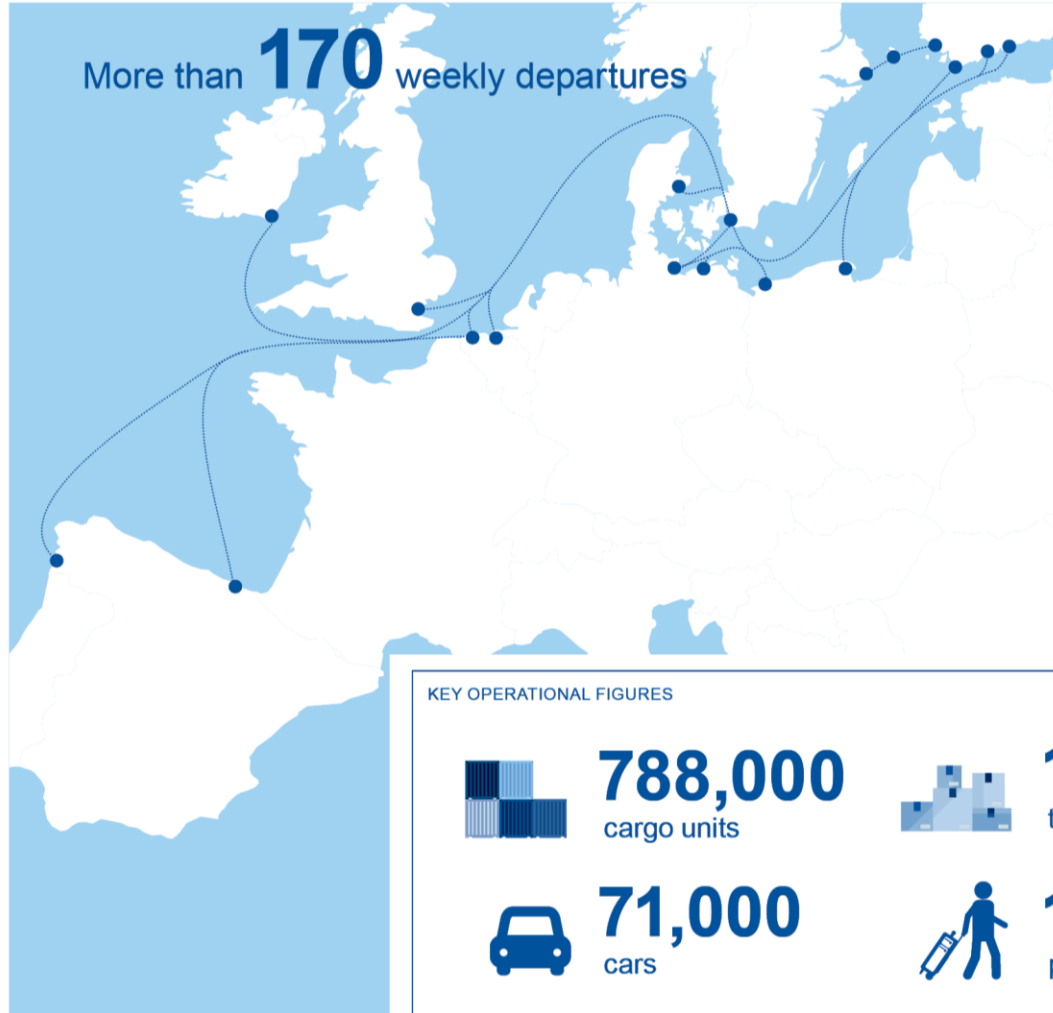
25.03.2026

Johanna Luoma, Environment & Sustainability Manager

Finnlines connects all the main ports in the Baltic Sea, the North Sea and beyond.

January–December 2025

More than **170** weekly departures



FINANCIAL KEY FIGURES

Total turnover
EUR million

713.5 (699.3)

EBITDA
EUR million

169.4 (162.0)

Net result
EUR million

67.2 (44.6)

KEY OPERATIONAL FIGURES



788,000
cargo units



1,113,000
tons of non-unitised freight



71,000
cars



1,021,000
passengers

Strategic routes

Ensuring security of supply across the region

- Frequent departures
- High-Capacity RoRo & RoPax Vessels
- Integrated freight and passenger services ensure flexible capacity
- Most critical maritime bridges to national and regional resilience

18 vessels: 9 x RoRo, 9 x RoPax

Finnlines carries **almost two-third of all rubber-tyred freight units** transported annually via Finland's sea bridges.



Green transition – challenge and opportunity across the logistics chain



- EU regulation accelerating the transition
 - ETS and FuelEU Maritime increase fossil fuel costs and drive decarbonisation
- Shift to alternative fuels
 - Growing use of onshore power, biodiesel, and methanol → Requires new infrastructure and onboard practices
- Finnliness at the forefront
 - Significant investments and new business strategies needed to lead the transition
- New market opportunities
 - Low-carbon transport solutions for customers (e.g. Green Lane service)
- Need for value chain alignment
 - Effective transition requires coordination and joint action across the entire logistics chain

Driving energy efficiency across fleet, operations, and fuels

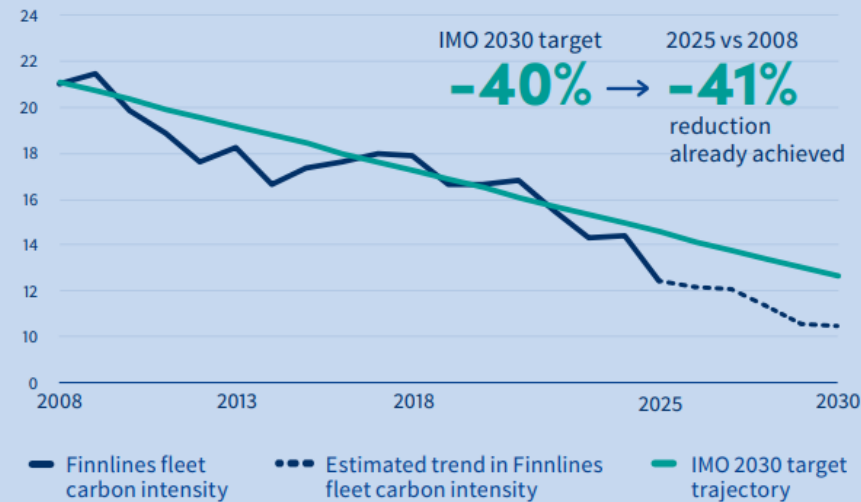
KEY ENVIRONMENTAL FIGURES

Fleet energy efficiency improvement, carbon intensity reduction
2025 vs 2024

-14%

12.5 g CO₂/GT*nm in 2025
14.5 g CO₂/GT*nm in 2024

Finlines fleet carbon intensity
(based on g CO₂/GT*nm figures)



Methods to further improve energy efficiency

- Fleet renewal: enable utilization of the latest technologies and innovations
- Energy efficiency upgrades: implement new energy efficiency solutions on existing vessels
- Operational efficiency: optimized schedules and practices
- Alternative fuels: electricity, biofuels, e-fuels (in the future)

Current challenges in Finnlines' operational environment

- **Energy market disruptions**
Fuel price volatility impacting costs
- **Economic situation in Finland and Europe in general**
Weak economic outlook impacting demand and market conditions
- **New risks requiring new operational responses**
 - **Shadow fleet**
Increased maritime safety concerns
 - **GNSS disruption**
Risks to navigation accuracy and vessel safety
 - **Cybersecurity threats**
Growing risk of cyber incidents affecting operations and infrastructure



Thank you!

 ***Finnlines***
a Grimaldi Group company =